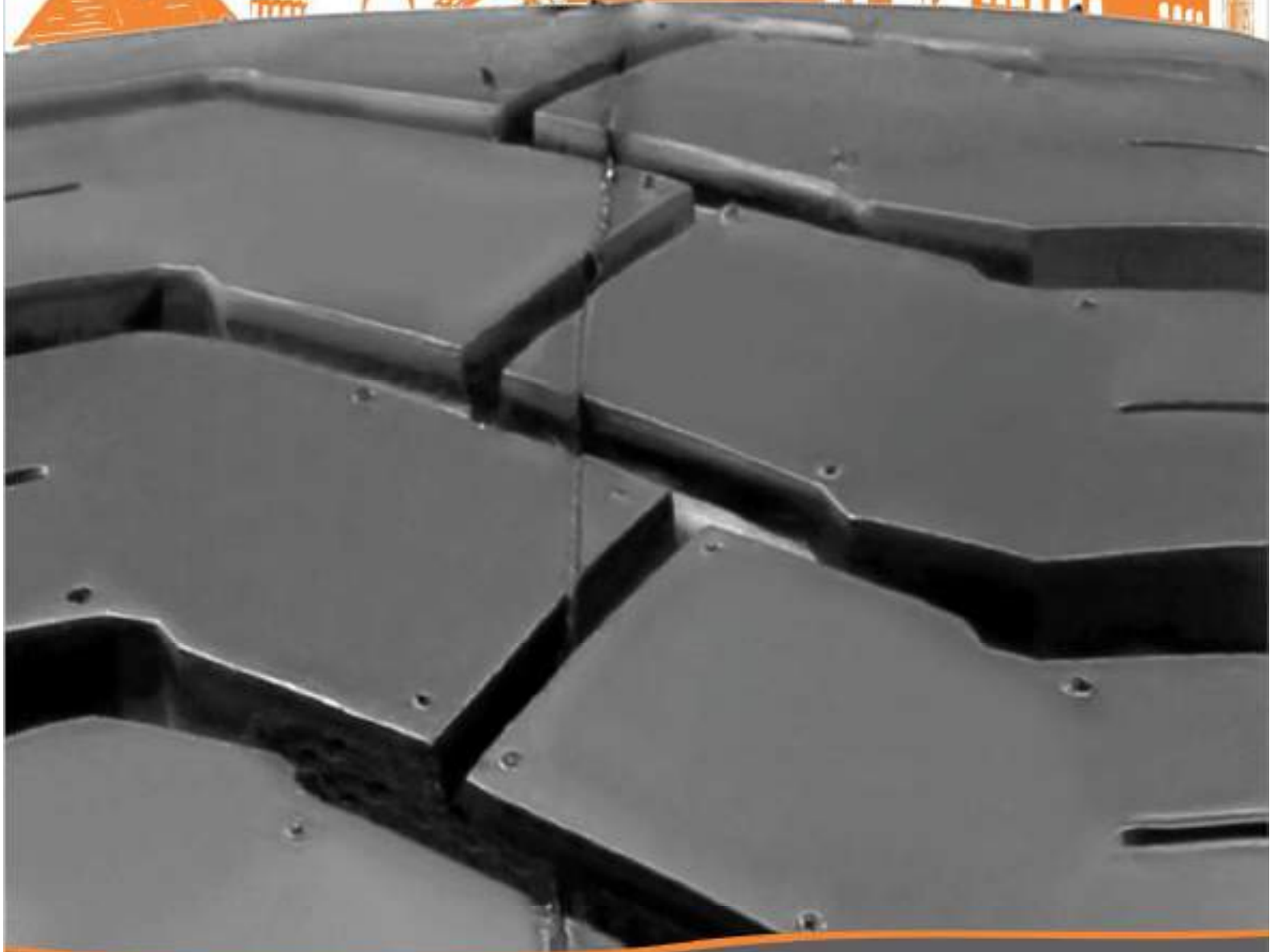




ADDOINDIA

Rule the road. . . .

-  **Farm & Implement Tyres •**
-  **Off The Road Tyres •**
-  **Industrial Fork-lift Tyres •**
-  **Nylon Truck/Bus Tyres •**



www.addoindiatyres.com



Dear Customers

Ever since its inception in 1982, "Eastman" has set new challenges for itself. Eastman has established itself in the markets like Middle East, Latin America, Europe, Asia, Australia and Africa.

All ADDO INDIA TYRES are manufactured as per international standards of ETRTO and USA's TRA. To meet further quality needs of importing countries we have attained various quality certificates like ISO, E-Mark, SASO etc.

The most important pre-requisites i.e. Good Quality, Competitive Pricing & Timely Delivery of tyre trade are taken full care of at ADDO INDIA Tyres by its well qualified and efficient workforce, which make sure that all three are met. Irrespective of how

the environment influences your choice, we stand committed to become your most reliable partner & this brochure is another step in that direction.

We keenly look forward to have a meaningful interaction.

J. R. Singal
(Managing Director)
Eastman Industries Limited



Achievements & Awards

- (1999): Received **NATIONAL EXPORT AWARD** from then Prime Minister of India, Shri Atal Bihari Vajpayee.
- (2000): Earned **ISO 9002** accreditation for the earnest Quality policies.
- (2001): Received **SGS GOLD SEAL** for work excellence from worldwide Quality Inspection Agency.
- (2002): Became multinational by establishing its permanent office (outsourcing network office) at **Hangzhou, China**.
- (2005): Received **ENGINEERING EXPORT AWARD** (2004-05) from then Commerce Minister of India, Shri Kamal Nath.
- (2006): Received **ENGINEERING EXPORT AWARD** (2005-06) from then Commerce Minister of India, Shri Kamal Nath.
- (2007): Received **EEPC Export Excellence Award** in 2007-08.
- (2008): Received prestigious **CII-EXIM Bank Award** for Business Excellence from Confederation of Indian Industry and EXIM Bank of India.
- (2009): Received **ENERGY EFFICIENCY AWARD** from then Union Minister of Power of India, Shri Sushil Shinde.
- (2010): Received **GOOD CORPORATE CITIZEN AWARD** from then Finance Minister of India, Shri Pranab Mukherjee.
- (2012): Received **EEPC India Award** in 2011-12 from Honorable Ambassador.
- (2017): Added a new office and warehouse in Mangli Nichi, Ludhiana for its Domestic Bicycle brand "**Addo India**" for dealer Market.
- (2021): Received National **5S Excellence** award with Diamond rating.
- (2021): Received "**A**" Grade in **BSCI** Certification (Social Audit-Manufacturing)
- (2023): Received **ZED** Certification from Ministry of Micro & Medium Enterprises, Govt. of India



ADDINDIA

Rule the road...

RANGE OF FARM & IMPLEMENT TYRES



Flotation Implement Tyres (I-3)



AIA01

- * Strongly built nylon construction ensures long life.
- * Improved pattern design ensures high load capacity and low rolling resistance which ensures good grip on surface.
- * Improved compounding ensures maximum life.

Size	Pattern Code	Ply Rating
400/60-15.5	AIA-01	8,12,14,16,18
550/60-22.5	AIA-01	12,16
600/50-22.5	AIA-01	12,16,18

Farm Implement & Trailer Tyres (I-1)



AIA02

- * Heavier load capacity ensures the tyre to operate under severe working conditions by providing excellent performance.
- * It is suitable for agriculture implement and trailer use, both On-Road & Off- Road.

Size	Pattern Code	Ply Rating
9.5L-14	AIA-02	6,8
9.5L-15	AIA-02	8,10,12
10.00-15	AIA-02	8,12,16
11L-15	AIA-02	8,10,12
12.5L-15	AIA-02	8,10,12,14
7.50-16	AIA-02	10,12,14
11L-16	AIA-02	8,10,12
12.5L-15	AIA-02	8,10,12,14
12.5L-16	AIA-02	8,10,12,14
16.5L-16.1	AIA-02	10,16
21.5L-16.1	AIA-02	16



Agriculture and Trailer Implement Tyres



AIA 03

- * Multirib and low section tyre designed for high flotation.
- * Optimised rib width and profiled shoulder for on and off the road service.
- * Extra reinforced plies for higher load capacity of farm implement.
- * Cuts and cracks resistant tread compound for extra service life.

Size	Pattern Code	Ply Rating
10.0/80-12	AIA-03	8,10,12,14
10.0/75-15.3	AIA-03	8,10,12,14,16,18,22
11.5/80-15.3	AIA-03	10,12,14,16,18,22
12.5/80-15.3	AIA-03	8,10,12,14,16,22
6.00-16	AIA-03	6,8
7.50-16	AIA-03	8
10.5/65-16	AIA-03	8,10,12,14
13.0/55-16	AIA-03	12,14,18
13.0/75-16	AIA-03	10
10.5/80-18	AIA-03	10,12,14
12.5/80-18	AIA-03	12,14,16
13.0/65-18	AIA-03	12,14,16

Agriculture and Trailer Implement Tyres



AIA 04

Size	Pattern Code	Ply Rating
400/60-15.5	AIA-04	12,14,16,18

Agriculture and Trailer Implement Tyres



AIA 05

Size	Pattern Code	Ply Rating
14.0/65-16	AIA-05	14
15.0/55-17	AIA-05	10,12,14,18



AIA 06

Size	Pattern Code	Ply Rating
19.0/45-17	AIA-06	10,14,16,18
500/50-17	AIA-06	10,14,16,18

Tractor Front Tyres (F-2) Double Rib



AIA 29

- * Specially profiled central rib for deeper penetration and steering control.
- * Adequately reinforced rib base for minimum lateral side-slipping.
- * Strong and Sturdy body plies for longer service durability.
- * Cuts and Cracks resistant tread compound for increased service life.

Size	Pattern Code	Ply Rating
5.50-16	AIA-29	6
6.00-16	AIA-29	4,6,8,10
6.50-16	AIA-29	6
7.50-16	AIA-29	6,8
7.50-18	AIA-29	8
6.50-20	AIA-29	10
7.50-20	AIA-29	10



Tractor Front Tyres (F-2) Three Rib



AIA32

Size	Pattern Code	Ply Rating
4.00-12	AIA-32	4,6
5.00-15	AIA-32	4
5.50-16	AIA-32	4,6
6.00-16	AIA-32	6,8,10
6.50-16	AIA-32	6,8
7.50-16	AIA-32	6,8,10
9.00-16	AIA-32	8,10
10.00-16	AIA-32	8,10
11.00-16	AIA-32	8,10
14L-16.1	AIA-32	10,12
4.00-19	AIA-32	4,6
6.00-19	AIA-32	6,8
7.50-20	AIA-32	10

Tractor Front Tyres (F-2)



AIA33

Size	Pattern Code	Ply Rating
4.00-16	AIA-33	4
4.50-16	AIA-33	4
5.00-16	AIA-33	4,6
6.00-16	AIA-33	6,8
7.50-16	AIA-33	6,8

Tractor Front Tyres (F-2) Multi Rib



AIA35

Size	Pattern Code	Ply Rating
9.5L-15	AIA-35	6
11L-15	AIA-35	8,10
10.00-16	AIA-35	8
11.00-16	AIA-35	8
7.50-18	AIA-35	8

Tractor Front Tyres (F-2) Single Rib



AIA37

Size	Pattern Code	Ply Rating
4.50-10	AIA-37	4
5.20-14	AIA-37	6
5.00-16	AIA-37	6
5.50-16	AIA-37	4,6,8,10
6.00-16	AIA-37	6,8,10
6.50-16	AIA-37	8
6.50-20	AIA-37	6,10

Tractor Rear Drive Wheel Tyres (R-1)



AIA39

- * Specially designed for traction, these tyres with deep treads, provides excellent traction for general farming.
- * Self cleaning deep lugs are especially designed to provide high traction and long life under hardest working condition, including On- Road service.

Size	Pattern Code	Ply Rating
8.00-20	AIA-39	6
8.3-20	AIA-39	6
9.5-20	AIA-39	6,8
11.2-20	AIA-39	8
8.3-22	AIA-39	8
9.5-22	AIA-39	8
8.3-24	AIA-39	6,8,10,12,14
9.5-24	AIA-39	6,8,10,12,14
11.2-24	AIA-39	6,8,10,12
12.4-24	AIA-39	8,10,12,14
13.6-24	AIA-39	8,10,12,14
14.9-24	AIA-39	4,6,8,10,12,14
16.9-26	AIA-39	8,10,12,14
18.4-26	AIA-39	8,10,12,14
11.2-28	AIA-39	8,10,12,14
12.4-28	AIA-39	8,10,12,14
13.6-28	AIA-39	8,10,12,14
14.9-28	AIA-39	8,10,12,14
16.9-28	AIA-39	8,10,12,14
18.4-28	AIA-39	8,10,12,14

Tractor Rear Drive Wheel Tyres (R-1)



AIA39

Size	Pattern Code	Ply Rating
14.9-30	AIA-39	8,10,12,14
16.9-30	AIA-39	8,10,12,14
16.9-30 (21 Lug)	AIA-39	8,10,12,14
8.3-32	AIA-39	6,8,10
9.5-32	AIA-39	6,8,10,12,14
12.4-32	AIA-39	8,10,12,14
16.9-34	AIA-39	8,10,12,14
18-4.34	AIA-39	8,10,12,14
20.8-34	AIA-39	8,10,12,14
7.2-36	AIA-39	8,10,12,14
8.3-36	AIA-39	6,8,10,12,14
9.5-36	AIA-39	8,10,12,14
12.4-36	AIA-39	8,10,12,14
13.6-36	AIA-39	8,10,12,14
8.3-38	AIA-39	8,10,12,14
11.2-38	AIA-39	8,10,12,14
12.4-38	AIA-39	8,10,12,14
13.6-38	AIA-39	8,10,12,14
14.00-38	AIA-39	8,10,12,14
15.5-38	AIA-39	8,10,12,14
16.9-38	AIA-39	8,10,12,14
18.4-38	AIA-39	8,10,12,14
20.8-38	AIA-39	8,10,12,14

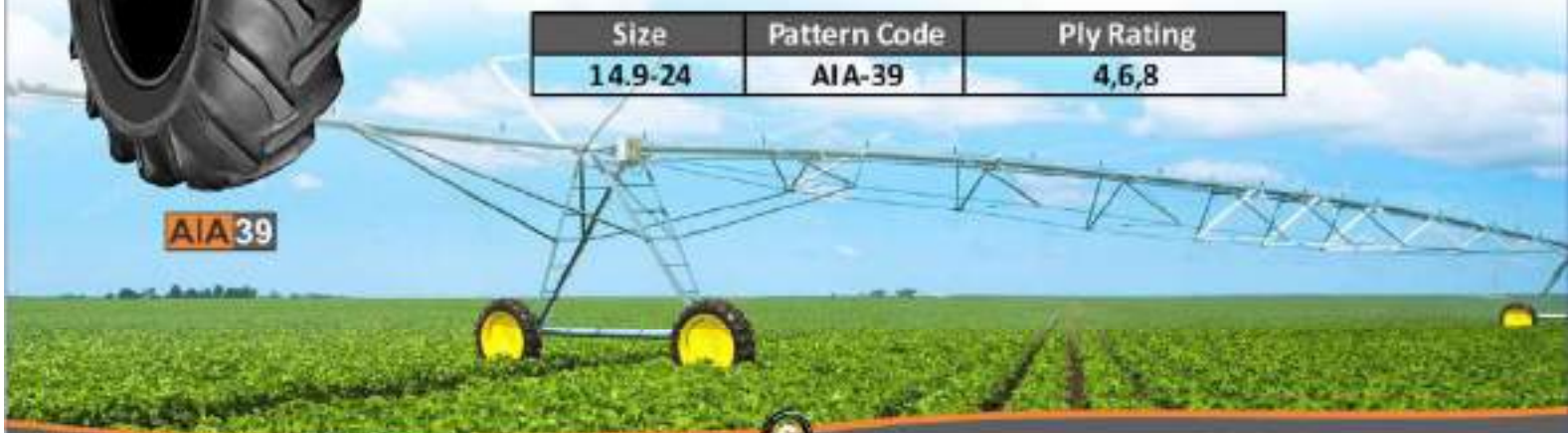
Irrigation Tyres (R-1)



AIA39

- * Specially designed for excellent traction & self cleaning property for wet soil and paddy fields.
- * Extra deep lugs provide improved performance with increased tyre life.
- * Natural rubber tread compound for better wear & tear resistance.
- * Tough nylon casing for longer tyre life.

Size	Pattern Code	Ply Rating
14.9-24	AIA-39	4,6,8



Irrigation Tyres (R-1)



AIA40

Size	Pattern Code	Ply Rating
11.2-24	AIA-40	6,8
11.2-38	AIA-40	6,8
14.9-24	AIA-40	6,8

Tractor Rear Drive Wheel Tyres (R-1) Deep Lug



AIA44

- * Specially designed for traction, these tyres with deep treads provides excellent traction for general farming.
- * Self cleaning deep lugs are especially designed to provide high traction and long life under hardest working condition, including On- Road service.

Size	Pattern Code	Ply Rating
12.4-28	AIA-44	8,10,12,14
13.6-28	AIA-44	8,10,12,14
14.9-28	AIA-44	8,10,12,14
16.9-30	AIA-44	8,10,12,14
18.4-30	AIA-44	8,10,12,14

Tractor Tyres (R-1) Tiller Application



AIA54

- * Multi Angled curved lug bars specially designed to get excellent traction on wet and sticky soil with excellent self cleaning properties, preventing mud clogging between the lugs.
- * Sidewall subber preventing weather cracking.
- * Tough tread compound to resist fast wear.

Size	Pattern Code	Ply Rating
5.00-12	AIA-54	4,8
6.00-12	AIA-54	8,12

Tractor Rear Drive Wheel Tyres (R-2)



AIA 55

- * Extra deep tread specially designed to get excellent traction on wet and sticky oil with excellent self cleaning properties, preventing mud clogging between the lugs.
- * Sidewall rubber preventing weather cracking.
- * Tough tread compound to resist fast wear.

Size	Pattern Code	Ply Rating
23.1-26	AIA-55	10,12
18.4-30	AIA-55	8,12
23.1-30	AIA-55	10,12
18.4-34	AIA-55	8,12
18.4-38	AIA-55	8

Tractor Tyres (R-1) Tiller Application



AIA 56

- * Multi Angled curved lug bars specially designed to get excellent traction on wet and sticky oil with excellent self cleaning properties, preventing mud clogging between the lugs.
- * Sidewall rubber preventing weather cracking.
- * Tough tread compound to resist fast wear.

Size	Pattern Code	Ply Rating
6.00-12	AIA-56	8,12



Tractor Trailers Tyres



AIA 48



AIA 49



AIA 50

- * Longitudinal, evenly spaced ribs for required free rolling characteristics.
- * Suitably profiled shoulder region with lateral grooves to control slide slips.
- * Strong and heavy duty NYLON body plies for higher load carrying capacity.
- * Tread compound for longer service life during all weather conditions.

Size	Pattern Code	Ply Rating
9.00-16	AIA-48	10,12,14,16,18
	AIA-49	
	AIA-50	

Golf, Lawn & Garden Tyres



AIA 16

- * Large contact area to provide best traction.
- * Best suited for applications on wet and dry surfaces.
- * Application for lawn & garden, trencher equipments, aerial work platform and portable forklifts.

Size	Pattern Code	Ply Rating
26X12-12	AIA-16	4,8,10,12



Golf, Lawn & Garden Tyres



AIA 21

Size	Pattern Code	Ply Rating
31 x 15.5 - 15	AIA-21	8,12,16



AIA 24

Size	Pattern Code	Ply Rating
18X8.50-8	AIA-24	4,6



AIA 25

Size	Pattern Code	Ply Rating
205/50-10	AIA-25	4,6



AIA 28

Size	Pattern Code	Ply Rating
18X8.50-8	AIA-28	4,6



Golf Lawn & Garden Tyres



AIA 25A

Size	Ply Rating
15x6.00-6	6
16x6.50-8	6
18x8.50-8	6



AIA 28A

Size	Ply Rating
22.5x8.00-12	12

Tractor Radial Tyres (R-1)



AIA 38

- * Addo India Radial Tyres usable at wide range of applications from field to road.
- * Wear resistant tread compound & deeper tread for longer life.
- * Greater ground contact suitable for better traction on grassland.

80 & 85 Series	
Size	Pattern Code
280/85R24	AIA-38
340/85R24	AIA-38
320/85R28	AIA-38
420/85R28	AIA-38
380/85R30	AIA-38
420/85R30	AIA-38
380/85R34	AIA-38
420/85R34	AIA-38
460/85R34	AIA-38
460/85R38	AIA-38
480/80R42	AIA-38

RANGE OF OFF THE ROAD TYRES



Compactor Tyres (R-3)



AIOT01

- * Specially designed wider lugs in tread centre for industrial tractors.
- * Suitably planned lug spacing to control in service buckling and cracking.
- * Tougher nylon body plies for heavy duty industrial and off-the road service.
- * Cuts and Cracks resistant tread compound for longer service life.

Size	Pattern Code	Ply Rating
18.4-26	AIOT-01	10,12
23.1-26	AIOT-01	8,12,16

All Traction Utility Tyres (G2-L2)



AIOT03

- * Good Traction in all weather conditions.
- * Good self cleaning properties.
- * Strong and sturdy heavy duty NYLON plies for longer service durability.
- * Cuts and Cracks resistant tread compound for increased service life.

Size	Pattern Code	Ply Rating
10.5/80-18	AIOT-03	8,10,12,14
12.5/80-18	AIOT-03	10,12,14,16



Off The Road R-1 Tyres



AIOT04

- * Multi-angled and bold lug bars for service durability and self cleaning.
- * Suitably designed lug bar spacing for comfort drive & added traction.
- * Strong and sturdy body plies for longer service durability.
- * Tread contact patch with broader lugs for heavy duty prime-movers.

Size	Pattern Code	Ply Rating
7.00-12	AIOT-04	4,6
5.00-15	AIOT-04	6
6.5/80-15	AIOT-04	6,8
10.0/75-15.3	AIOT-04	8,10,12,14,18
11.5/80-15.3	AIOT-04	8,10,12,14,16,18
4.00-16	AIOT-04	4,6,8
6.00-16	AIOT-04	6,8
7.50-16	AIOT-04	6,8
15.0/55-17	AIOT-04	10,12,14
19.0/45-17	AIOT-04	12,14,16,18
12.5/80-18	AIOT-04	10,12,14,16
405/70-20	AIOT-04	10,12,14,16
15.5/80-24	AIOT-04	10,12,14,16

MPT Traction Terrain Tyres



AIOT05

- * Good Traction in all weather conditions.
- * Good self cleaning properties.
- * Strong and sturdy heavy duty NYLON plies for longer service durability.
- * Cuts and Cracks resistant tread compound for increased service life.

Size	Pattern Code	Ply Rating
10.0/75-15.3	AIOT-05	10,12,14,18
11.5/80-15.3	AIOT-05	10,14,18
10.5-18	AIOT-05	10,12
12.5-18	AIOT-05	10,12
18-19.5	AIOT-05	16, 18
10.5-20	AIOT-05	10
12.5-20	AIOT-05	10,12
14.5-20	AIOT-05	10, 14, 18
15.5/80-24	AIOT-05	12,14,16

Industrial Tractor Tyres F-3



AIOT08

- * Specially designed ribs for excellent durability and track control.
- * Adequately reinforced buttress profile adopted for industrial services.
- * Strong and Sturdy body plies for longer service durability.
- * Cuts and cracks resistant tread compound for increased service life.

Size	Pattern Code	Ply Rating
11L-15	AIOT-08	8,10,12
11L-16	AIOT-08	8,10,12,14

All Traction Utility Tyres R-4



AIOT09

- * Specially designed wider lugs in tread center for industrial tractors.
- * Suitably planned lug spacing to control in-service buckling and cracking.
- * Tougher nylon body plies for heavy duty industrial and off-the road service.
- * Cuts and Cracks resistant tread compound for longer service life.

Size	Pattern Code	Ply Rating
16.9-24	AIOT-09	8,10,12,14,16
17.5L-24	AIOT-09	8,10,12,14,16
18.4-24	AIOT-09	12
19.5L-24	AIOT-09	12,14,16
21L-24	AIOT-09	12

Skid Steer Tyres



AIOT12

- * Special formulated tread compound provide excellent chip & tear resistance.
- * Thick side wall to give protection against damage.
- * Advance tread compound for long life on paved & other hard surface.
- * Special design for broadcast contact surface and maximum gripping power.

Size	Pattern Code	Ply Rating
10-16.5	AIOT-12	10,12
12-16.5	AIOT-12	10,12,14
14-17.5	AIOT-12	14
15-19.5	AIOT-12	14

Excavator & Construction Machine Tyres



AIOT18

- * Specially designed Tread Patterns for excellent Traction.
- * Good Self Cleaning ability.
- * Good road movement ability.

Size	Pattern Code	Ply Rating
10.00-20	AIOT-18	16
9.00-20	AIOT-18	14
8.25-20	AIOT-18	14

Heavy Duty Skid Steer & Construction Tyres (L5)



AIOT27

Size	Pattern Code	Ply Rating
10-16.5	AIOT-27	10,12
12-16.5	AIOT-27	10,12,14
23x8.50-12	AIOT-27	8,12
27x8.50-15	AIOT-27	10
14-17.5	AIOT-27	14
18.4-26	AIOT-27	12
16.9-28	AIOT-27	12
19.5L-24	AIOT-27	16
13.00-24	AIOT-27	16
14.00-24	AIOT-27	16



Heavy Duty Skid Steer Tyres



AIOT 30

Size	Pattern Code	Ply Rating
10-16.5	AIOT-30	10,12
12-16.5	AIOT-30	10,12,14

Graders Tyres G-2



AIOT 13

- * Designed for tough On-Road & Off-the-Road Construction machinery and vehicles.
- * An open spaced traction pattern with self-cleaning property provides traction capability resulting in easy driving on heavy dirt and mud condition.
- * Wide based flat tread with large contact area for even distribution of ground contact pressure.
- * Tough Carcass & Special tread compound to withstand cuts, bruises in severe operating conditions for increased service life.

Size	Pattern Code	Ply Rating
13.00-24	AIOT-13	12,14,16
14.00-24	AIOT-13	12,14,16,20,24



Earthmover Tyres E3-L3



AIOT20

- * Non Directional pattern with bold lug-bars for excellent traction characteristics.
- * Heavier buttress design with adequate spacings for cooler running service.
- * Strong and heavy duty NYLON body plies for higher load carrying capacity.
- * Suitably designed lugs with special tread compound for extra service life.

Size	Pattern Code	Ply Rating
9.00-20	AIOT-20	18
10.00-20	AIOT-20	20
17.5L-24	AIOT-20	12
14.00-24	AIOT-20	16,20,24,28
16.9-24	AIOT-20	16
14.00-25	AIOT-20	20,24,28
15.5-25	AIOT-20	16
17.5-25	AIOT-20	12,16,20
20.5-25	AIOT-20	16,20
23.5-25	AIOT-20	16,20,24

Industrial Tractor Tyres (R4)



AIOT24

- * Addo India Industrial Tractor Tyres are developed for excellent tread wear and road ability.
- * Extra Wide Lugs to resist buckling, tearing and cracking.
- * Specially designed Lugs result in even wear.

Size	Pattern Code	Ply Rating
15.5/60-18	AIOT-24	14
15.5/70-18	AIOT-24	10
17.5/65-20	AIOT-24	14
16.9-24	AIOT-24	12,16
17.5L-24	AIOT-24	12,16
18.4-24	AIOT-24	12
19.5L-24	AIOT-24	12
18.4-26	AIOT-24	12
16.9-28	AIOT-24	12



Compactor Tyres (Smooth)



AIOT 25

- * Addo India Compactor Tyres are developed to provide even distribution of ground pressure .
- * Ability to effect maximum compaction.
- * Ability to endure high temperatures.

Size	Pattern Code	Ply Rating
7.50-15	AIOT-25	6, 14
9.00-20	AIOT-25	12, 14
11.00-20	AIOT-25	16, 18

Graders Tyres G-2



AIOT 26

- * Designed for tough On-Road & Off-the-Road Construction machinery and vehicles.
- * An open spaced traction pattern with self-cleaning property provides traction capability resulting in easy driving on heavy dirt and mud condition.
- * Wide based flat tread with large contact area for even distribution of ground contact pressure.
- * Tough Carcass & Special tread compound to withstand cuts, bruises in severe operating conditions for increased service life.

Size	Pattern Code	Ply Rating
15.5-25	AIOT-26	12,14
17.5-25	AIOT-26	12,16
20.5-25	AIOT-26	16,20

All Traction Utility Tyres R-4 (Heavy Duty)



AIOT 28

- * Specially designed wider lugs in tread center for industrial tractors.
- * Suitably planned lug spacing to contril in-service buckling and cracking.
- * Tougher nylon body plies for heavy duty industrial and off-the road service.
- * Cuts and Cracks resistant tread compound for longer service.

Size	Pattern Code	Ply Rating
18.4-26	AIOT-28	12,14,16
16.9-28	AIOT-28	8,10,12,14,16

RANGE OF INDUSTRIAL TYRES



Speciality Compounds

No single compound can provide solutions for varying application demands of Material Handling Industry. We have recognized this fact and has pioneered in providing application based customized solutions. Some of the popular versions are given here and more versions available on demand.

VERSION	ENVIRONMENT	FOCUS INDUSTRY
NON-MARKERS	CLEAN FLOOR, EPOXY COATED	PHARMA, FOOD & BEVERAGE
HEAT-RESISTANT	HIGH AMBIENT TEMPERATURE	FOUNDRY, SMELTER PLANT
OIL-RESISTANT	OILY	PETROCHEMICAL, EDIBLE OIL PLANT
CUT-RESISTANT	SHARP-EDGED WORKPLACE HAZARD	BOTTLING, GLASS, IRON & STEEL PLANT
ANTI-STATIC	ELECTRICALLY CONDUCTING	DEFENCE, CHEMICAL
AQUA-GRIP	WET, SNOW, SLIPPERY	GENERAL
ANTI-ABRASIVE	RIBBED, CONCRETE FLOOR	GENERAL
ANTI-SKID	INCLINED SURFACE, ACCESS RAMP	GENERAL

Caution: Non-Marker should always be used with Earthing Strips to avoid static electricity build up.

Tyre Selection Chart

KEY DETERMINING FACTORS	EFICIENTE (BUDGET/ ECONOMIC)	PERFECTO (STANDARD)	MASIVO (PREMIUM)	ENORME (SUPER PREMIUM)
SURFACE CONDITION	NORMAL	NORMAL	TOUGH	TOUGH
SPEED (HEAVY DUTY CYCLE)	< 25 kmph	< 25 kmph	< 25 kmph	< 25 kmph
USAGE	INTERMITTENT	INTERMITTENT	CONTINUOUS	CONTINUOUS
APPROXIMATE DAILY USAGE	10-12 Hours	15 Hours	20 Hours	24 Hours
LOAD CARRYING CAPACITY (HEAVY DUTY CYCLE)	GOOD	GOOD	EXCELLENT	EXCELLENT
LIFE	GOOD	GOOD	EXCELLENT	EXCELLENT
SPECIAL APPLICATION REQUIREMENTS*	AVERAGE	AVERAGE	GOOD	EXCELLENT
PATTERNS AVAILABILITY	Y	Y	Y	Y,Y1

*Equipment used in abnormal surface condition and working environment

Solid Resilients



Y



Y



R (Rib)



S (Smooth)

Available in following Grades:

EFICIENTE:

- EFICIENTE is best-in-class tyre for low-intensity applications.
- EFICIENTE is best value proposition in entry level solid tyres range.
- Durable Natural Rubber Tread, Extra wide footprint for Low Vibrations.

PERFECTO:

- PERFECTO is solid performance tyres meeting most demanded need of industry Low Cost and Long Mileage.
- PERFECTO is designed to deliver all round performance.
- Made from great quality rubber compounds to deliver good wear and abrasion resistance.
- Exceptional low rolling resistance.
- Reliable and maintenance free product.

MASIVO:

- MASIVO is made to meet various general High Duty applications.
- MASIVO brings lower rolling resistance enable tyres to achieve economical running, safety and comfort in operation.
- MASIVO made of premium compound for longer wear and less heat generation.
- Made for continuous duty applications.
- Augmented shock absorption.

ENORME:

- ENORME is made to meet various Super Heavy Duty applications.
- Made to run continuous on high demanded duty applications
- Made of super premium compound to meet high end industry expectations.
- Excellent Design to minimize break down cost.
- Exceptional grip under any circumstances and better resistance to wear.

Solid Resiliants



Y



Y



R (Rib)



S (Smooth)

Key Applications:

- Fork Lifts
- Ground Support Equipment
- Port Trailers
- Industrial Trailers
- Access / Warehouse Equipment
- Platform Trucks
- Reach Stackers
- Empty Container Handlers
- Other Material Handling Applications

Size	Rim Width (Inch)	Tread
3.50 x 4	2.10	R
3.00 x 4	2.10	R
4.00 x 4	2.50	R / Y
3.50 x 5	3.00	R
4.00 x 8	2.75/3.00/3.75	R / Y
5.00 x 8	3.00/3.75	R / Y
12 x 3 1/2-8	3.00	S
100/80-8	2.5	S
17 x 7-8	4.33	S
140 / 55-9	4.00	Y
6.00 x 9	4.00	Y
15x 4 1/2X8 (125/75-8)	3.00/ 3.25	Y / R / S
16 x 6- 8 (150/75-8)	4.33	Y
18 x 7 - 8 (180/70-8)	4.33	Y / S
21 x 8 - 9 (200/75-10)	6.00	Y
200/50-10	6.50	Y
23 x 9 -10 (225/75-10)	6.50	Y
6.50 x 10	5.00	Y
7.50 x 10	5.00/5.50	Y
23 x 10 -12 (250/60-12)	8.00	Y
7.00 x 12	5.00	Y
27 x 10-12 (250/75-12)	8.00	Y
28 x 12.5 x 15 (345/45-15)	9.75	Y
2.50 x 15 (250/70-15)	7.00 / 7.50	Y
3.00 x 15 (315/70-15)	8.00	Y
400 x 60-15	11.00	Y

Solid Resiliants



Y



Y



R (Rib)



S (Smooth)

Size	Rim Width (Inch)	Tread
5.50 x 15	4.50	Y
6.00 x 15	4.50	Y
7.00 x 15	5.50/6.00/6.50	Y
7.50 x 15	5.50/6.00/6.50	Y
8.15 x 15 (225/75-15) (28 x 9-15)	7.00	Y
8.25 x 15	5.50/6.50	Y
6.50 x 16	5.50	S
7.50 x 16	5.50/6.00/6.50	Y
8.25 x 16	5.50/6.00	Y
355/50-20	10.00	S
7.50 x 20	6.00	Y
8.25 x 20	6.50/7.00	Y
9.00 x 20	6.50/7.00/7.50/8.00	Y
10.00 x 20	7.50/8.00	Y/S
11.00 x 20	7.50/8.00/8.50	Y/S
12.00 x 20	8.00	Y/S
13.00 x 20	8.00/8.50	S
12.00 x 24	8.50/10.00	Y
14.00 x 24	10.00	Y
14.00 x 25	10.00	Y

Press-on Band



L (Lug)



L (Lug)



S (Smooth)



SA (Semi-Aggressive)

Features:

- Low rolling resistance design for higher energy efficiency.
- Superior bonding technology for trouble free running.
- Wear Resistant tread compound for extended life.
- Wider tread profile for reduced work load.
- Greater surface contact offering better load distribution, excellent stability, high chipping resistance.
- Tread in smooth & lug patterns
- Available in Non-Marker and Polyurethane versions
- Customized compounds available on request

Key Applications:

Fork Lifts, Trolleys, Pallet Trucks, Stackers
Rotators

Size (In Inches)	Size (In MM)	Tread
10 x 4 x 6 1/4	-	L / S
10 x 5 x 6	-	L / S
10 x 5 x 6 1/4	254 x 127 x 158.8	L / S
-	250 x 130 x 140	S
-	250 x 130 x 145	S
-	250 x 90 x 170	S
-	300 x 100 x 203	S
13 x 3 1/2 x 8	-	L
13 x 4 1/2 x 8	330 x 114 x 203.2	L
13 x 5 1/2 x 8	343 x 140 x 203.2	L
14 x 4 1/2 x 8	356 x 114 x 203.2	L / S
15 1/2 x 5 x 10	394 x 152 x 254	L / S
-	405 x 100 x 305	L
-	450 x 300 x 305	L
-	400 x 100 x 310	L
-	430 x 160 x 320	L
-	405 x 120 x 305	L
16 x 5 x 10 1/2	406 x 127 x 266.7	L / S / SA
16 x 6 x 10 1/2	406 x 152 x 266.7	L / S / SA
16 1/4 x 5 x 11 1/4	413 x 127 x 285.8	L / S / SA
16 1/4 x 6 x 11 1/4	413 x 152 x 285.8	L / S / SA
18 x 5 x 12 1/8	457 x 127 x 308	L / S / SA
18 x 6 x 12 1/8	457 x 152 x 308	L / S / SA
18 x 7 x 12 1/8	457 x 178 x 308	L / S / SA
18 x 8 x 12 1/8	457 x 203 x 308	L / S / SA
18 x 9 x 12 1/8	457 x 229 x 308	L / S / SA
-	500 x 160 x 370	L / S

Press-on Band



L (Lug)



L (Lug)



S (Smooth)



SA (Semi-Aggressive)

Size (In Inches)	Size (In MM)	Tread
21 x 5 x 15	533 x127 x381	L / S
21 x 6 x 15	-	L / S
21 x 7 x 15	533 x178 x381	L / S
21 x 8 x 15	533 x203 x381	L / S
21 x 9 x 15	533 x229 x381	L / S
20 x 4 x 16	-	L / S
20 x 6 x 16	508 x152 x406.4	L / S
20 x 8 x 16	508 x203 x406.4	L / S
20 x 9 x 16	-	L / S
22 x 6 x 16	559 x152 x406.4	L / S
22 x 7 x 16	559 x178 x406.4	L / S
22 x 8 x 16	559 x203 x406.4	L / S
22 x 9 x 16	559 x229 x406.4	L / S
22 x 10 x 16	-	L / S
22 x 12 x 16	559 x305 x406.4	L / S
22 x 12 x 17 3/4	559 x305 x451	L / S
22 x 14 x 16	559 x356 x406	L / S
22 x 16 x 16	-	L / S
-	580 x340 x406	L / S
-	550 x160 x410	L / S
-	645 x350 x410	L / S
-	630 x200 x480	L / S
-	630 x220 x480	L / S
-	645 x250 x480	L / S
-	660 x200 x480	L / S
26 x 6 x 20	-	L / S
26 x 7 x 20	660 x178 x508	L / S
26 x 8 x 20	-	L / S

Size (In Inches)	Size (In MM)	Tread
28 x 12 x 22	711 x305 x 559	L / S
28 x 15 x 22	711 x381 x 559	L / S
28 x 16 x 22	-	L / S
-	920 x240 x670	L / S
-	920 x400 x670	L / S

Industrial Pneumatic



AIOT15

Features:

- Customized tread compound for cooler running & wear resistance
- Special design to meet all regular Material Handling applications.
- Special tread profile for improved traction & stability.

Size	Ply Rating	Pattern
5.00 - 8	8	AIOT-15
6.00 - 9	10	AIOT-15
6.50 - 10	12	AIOT-15
7.00 - 12	14	AIOT-15
8.15 - 15	14	AIOT-15
8.25 - 15	16	AIOT-15

Industrial Pneumatic



AIOT17

Features:

- Premium tread compound for cooler running & wear resistance
- Unique sipes in shoulder area for enhanced heat dissipation
- Heavy duty design for tough applications.
- Reinforced nylon casing for higher load rating
- Wider tread profile for improved traction & stability
- Rim-Guard protector for rim flange area
- Reinforced sidewall for reduced deflection & improved protection

Size	Ply Rating	Pattern
4.00 - 8	8	AIOT-17
5.00 - 8	8,10	AIOT-17
16 x 6 - 8	18	AIOT-17
18 x 7 - 8	14,16,18	AIOT-17
21 x 8 - 9	16	AIOT-17
6.00 - 9	10,12	AIOT-17
6.50 - 10	10,12,14	AIOT-17
7.00 - 12	12,14,16	AIOT-17
23 x 9 - 10	18,20	AIOT-17
27 x 10 - 12	12,16	AIOT-17
23 x 10 - 12	18	AIOT-17
7.00 - 15	12,14,16	AIOT-17
7.50 - 15	14,16	AIOT-17
8.15 - 15	12,14,16	AIOT-17
250 - 15	16	AIOT-17
300 - 15	16,18,20	AIOT-17
8.25 - 15	14,16	AIOT-17

Industrial Pneumatic



AIA 53

Features:

- Premium tread compound for cooler running & wear resistance
- Unique sipes in shoulder area for enhanced heat dissipation
- Heavy duty design for tough applications.
- Reinforced nylon casing for higher load rating
- Wider tread profile for improved traction & stability
- Rim-Guard protector for rim flange area
- Reinforced sidewall for reduced deflection & improved protection

Size	Ply Rating	Pattern
23x5	6,10	AIA-53

Industrial Pneumatic



AIOT 19

Features:

- Addo India Premium Fork-Lift Tyres developed to perform Heavy Duty services on Fork-Lifts, Material Handling and Mining Equipments.
- Extra Deep Tread and Strong Sidewall ensure exceptional durability and minimize the break down time.
- Reinforced sidewall for reduced deflection & improved protection.

Size	Ply Rating	Pattern
10.00-20	18	AIOT-19
12.00-20	20	AIOT-19



Solid Skid Steer**AIOT 29****Features:**

- Natural rubber compounds with excellent chunking, tear and cut resistance
- Designed to reduce vibration and increase driver comfort equivalent to a foam filled pneumatic tyre.
- Twin flex tires provide added shock protection to your loader, reducing your shock-related maintenance costs and downtime.
- Non-directional, deep tread for longer wear and good traction performance.

Size	Rim Size	Pattern
31x10x16 (10-16.5)	6.00-16	AIOT-29
31x10x20 (10-16.5)	7.50-20	AIOT-29
33x12x20 (12-16.5)	7.50-20	AIOT-29



RANGE OF NYLON THREE WHEELER LIGHT TRUCK & TRUCK BUS TYRES



Nylon Three Wheeler Tyres



AI 237



AI 214



AI 228



AI 240



AI 213C

Size	Application	Pattern Code	Ply Rating
4.00-8	Auto Rickshaw	AI-237	8
4.00-8	Auto Rickshaw	AI-214	8
4.50-10	Auto Rickshaw	AI-228	8
4.50-10	Auto Rickshaw	AI-240	8
5.00-12	Utility	AI-214	10
155/80D12	Utility	AI-213 C	8



Nylon Light Truck & Truck/Bus Tyres



AI214



AI213

Size	Application	Pattern Code	Ply Rating
6.50-14	Light Truck	AI-214	8
7.00-15	Light Truck	AI-214	10
7.00-15	Light Truck	AI-214	12
7.50-15	Light Truck	AI-214	14
7.00-16	Light Truck	AI-214	12
7.00-16	Light Truck	AI-214	14
7.50-16	Light Truck	AI-214	12
7.50-16	Light Truck	AI-214	14
7.50-16	Light Truck	AI-214	16
8.25-16	Light Truck	AI-214	16
9.00-20	Truck / Bus	AI-214	16
10.00-20	Truck / Bus	AI-214	16
10.00-20	Truck / Bus	AI-214	18
7.00-15	Light Truck	AI-213	12
7.50-15	Light Truck	AI-213	14
7.00-16	Light Truck	AI-213	14
7.50-16	Light Truck	AI-213	16
8.25-16	Light Truck	AI-213	16
8.25-16	Light Truck	AI-213	18
10.00-20	Truck / Bus	AI-213	16
10.00-20	Truck / Bus	AI-213	18
11.00-20	Truck / Bus	AI-213	16
11.00-20	Truck / Bus	AI-213	18



Nylon Light Truck & Truck/Bus Tyres

**New
Launch**



AI 200



AI 214A



AI 202



AI 211



AI 200A



AI 111



AI 112



AI 201

Size	Application	Pattern Code	Ply Rating
7.50-16	Light Truck	AI-200	12
7.50-16	Light Truck	AI-200	14
7.50-16	Light Truck	AI-200	16
12.00-24	Truck	AI-200	18
12.00-24	Truck	AI-200	20
6.00-14	Light Truck	AI-214 A	8
6.00-14	Light Truck	AI-214 A	10
7.50-16	Light Truck	AI-202	14
7.50-16	Light Truck	AI-202	16

Size	Application	Pattern Code	Ply Rating
12.00-24	Truck	AI-211	18
12.00-24	Truck	AI-211	20
9.00-20	Truck	AI-200 A	16
7.00-15	Light Truck	AI-111	10
10.00-20	Truck / Bus	AI-112	14
7.50-16	Light Truck	AI-201	14
7.50-16	Light Truck	AI-201	16
10.00-20	Truck	AI-201	16
10.00-20	Truck	AI-201	18

Nylon Light Truck, Sand & Mining Tyres

**New
Launch**



Power Miner



Sand Rider



AI 216



AIOT 007



AI 206



AI 212

Size	Application	Pattern Code	Ply Rating
12.00-20	Mining	Power Miner	18
12.00-20	Mining	Power Miner	20
9.00-20 UD*	Mining	AIOT-007	18
10.00-20	Mining	AIOT-007	18
11.00-20	Mining	AIOT-007	18
9.00-16 TL	Sand Tyre	Sand Rider	8
9.00-15	Sand Tyre	Sand Rider	6
10-16.5	Sand Tyre	Sand Rider	8
7.50-16	Light Truck	AI-216	8
7.50-16	Light Truck	AI-216	10
7.50-16	Light Truck	AI-216	12
7.50-16	Light Truck	AI-206	10
7.50-16	Light Truck	AI-206	12
8.25-16	Light Truck	AI-212	16

Notes

This image shows a single sheet of white paper with horizontal blue or grey ruling lines. The lines are evenly spaced and run across the width of the page. There are no margins, text, or other markings on the paper.

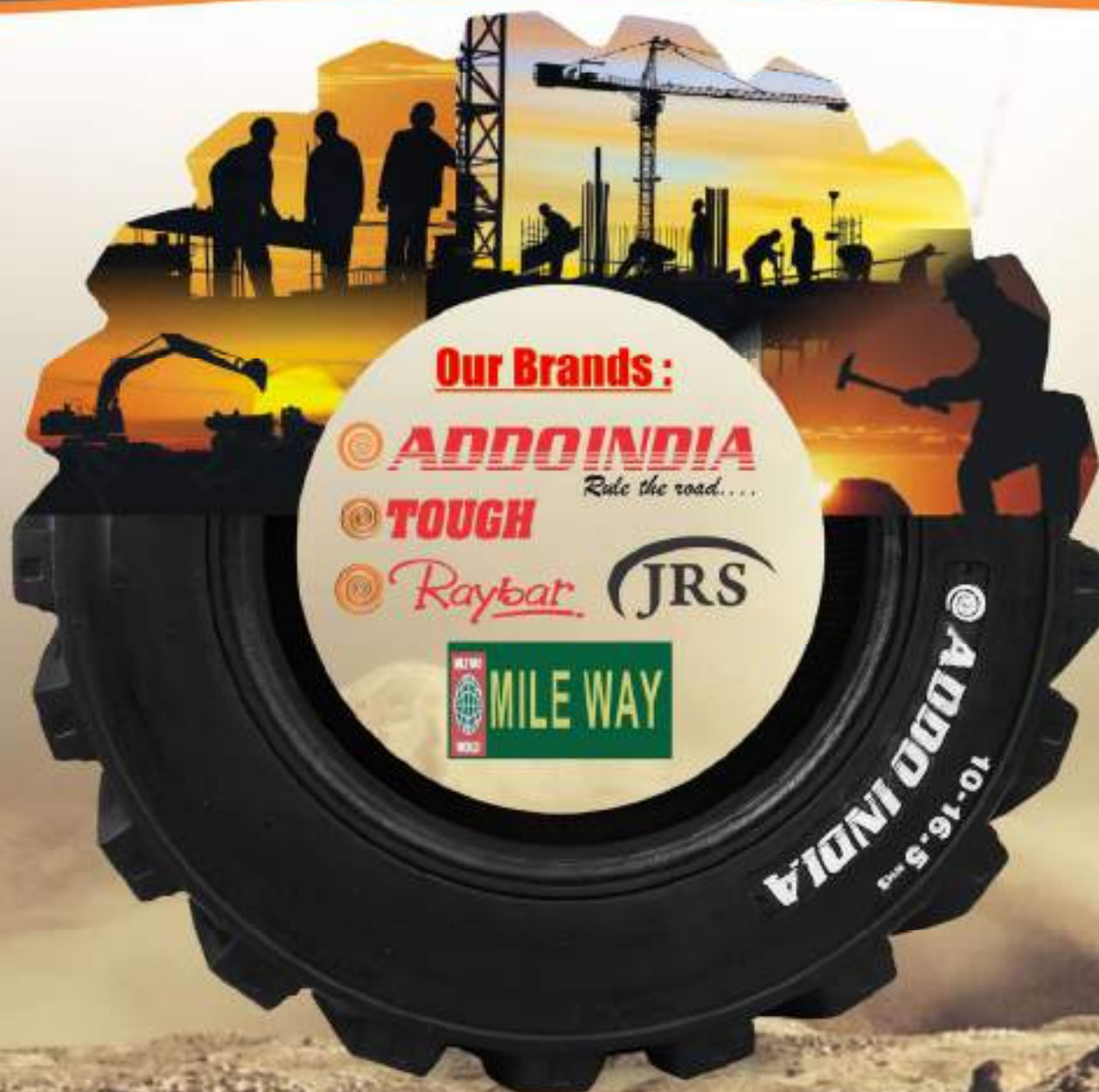
Notes

This image shows a single sheet of white paper with horizontal blue or grey ruling lines. The lines are evenly spaced and run across the width of the page. There are no margins, text, or other markings on the paper.



ADDOINDIA

Rule the road....



Eastman[®] INDUSTRIES LTD.

C-87, Phase-V, Focal Point, Ludhiana -141010 (India)

Tel. : +91-161-5280064 WhatsApp & Mobile : +91-7087982333, 8054777012

E-mail : addoindia@eastmanglobal.com, autotyre7@addoindiattyres.com

Website : www.addoindiattyres.com